

ALBERT Keramik S

Design: Giorgio Cattelan



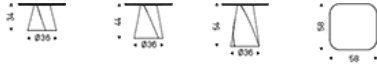
Product description

Coffee table with base in titanium (GFM11), bronze (GFM18) or pearl (GFM70) embossed lacquered steel. Top in ceramic Marmi matt Golden Calacatta (KM05), glossy Golden Calacatta (KM06), matt Portoro (KM07), glossy Portoro (KM08), Breccia (KM12), Corcovado (KM14), Kaindy (KM16), matt Borghini Calacatta (KM18), glossy Borghini Calacatta (KM19), Colosseo (KM21) or matt Invisible (KM24).

ALBERT Keramik S

Design: Giorgio Cattelan

Dimension

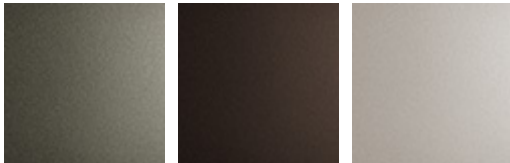


ALBERT Keramik S

Design: Giorgio Cattelan

Finishes: base

metal



GFM11 titanium embossed

GFM18 bronze embossed

GFM70 pearl embossed

Finishes: top

Marmi ceramic



KM05 matt Golden Calacatta

KM06 glossy Golden Calacatta

KM07 matt Portoro

KM08 glossy Portoro

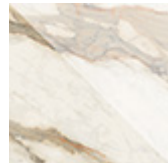
KM12 Breccia

KM14 Corcovado

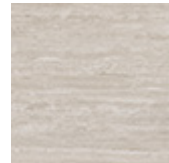
KM16 Kaindy



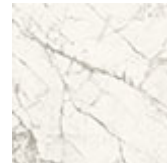
KM18 matt Borghini Calacatta



KM19 glossy Borghini Calacatta



KM21 Colosseo



KM24 matt Invisible